

Better Homes and Gardens Special Interest

WIN  
a designer  
washer & dryer p. 7

# decorating

## Fresh Looks

That Fit Your Style



Spring 2008  
On display June 3

\$5.99 U.S.



BHG SIP Black Checkout

RemodelingCenter.com

Surprise!  
Eco-friendly  
can be pretty

Ultimate Guide to Floors  
Read this before you buy p. 62

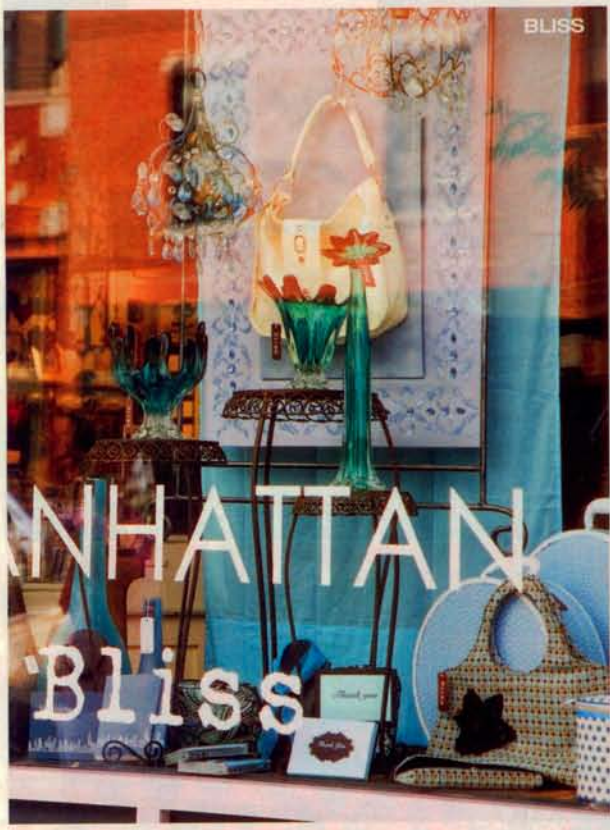
# rocky mountain jewel

## PEARL STREET'S TREASURE TROVE

What began three decades ago as a four-block pedestrian mall now serves as Boulder's social hub, offering more than 170 shops along 12 city blocks.



Writer and Field Editor: Mindy Pantel | Photographer: Emily Minton-Redfield



BLISS



HW HOME

# MANHATTAN Bliss

**G**rowing up in the shadows of the Flatiron and Rocky mountains, Boulder has quietly developed into a mini metropolis that offers something for everyone—open spaces, upscale grocery stores and restaurants, an athletic and healthful atmosphere, drive-up access to the state's many famous ski resorts, and enviable shopping.

Thirty years ago, when the city closed four blocks in the heart of downtown to all but pedestrian traffic, the Pearl Street Mall was born. Today the mall and the streets at either end have emerged as a popular destination-shopping district—a must-see even for snow-sports enthusiasts visiting Denver, just 30 miles away. In every season, independent shops feature furnishings, antiques, kitchen and bath necessities, and home accessories, and in warm-weather months the array of street entertainers and pushcart peddlers selling everything from homemade ice cream to Chicago-style hot dogs makes finding your way from store to store part of the fun.

Start on the east end of the mall at **HW Home** (1941 Pearl St., 303/545-0320, [www.hwhome.com](http://www.hwhome.com)), where beautifully styled room vignettes provide ideas for melding ultramodern styles with classic designs, and mixing antiques with trendsetting pieces. Handcrafted Italian dinnerware, silk brocade pillows, custom art pieces, and bed linens to suit every season are among the wide range of offerings.

It's a few blocks west to **Bliss** (1643 Pearl St., 303/443-0355), where there's a bounty of bed, bath, kitchen, and

## how to get there

Boulder nestles at the base of the Flatirons, the stunning foothills of the Rocky Mountains, and is accessible from Denver International Airport by car, bus, or airport shuttle. Whatever your mode of transportation, the hour-long drive will lead to U.S. Highway 36—and a breathtaking scenic overlook just before you enter the valley. Turn north onto 28th Street. At Pearl Street, turn west. Both garage and street parking are available at the Pearl Street Mall.