

HW HOME. LOCAL DESIGN. GLOBAL STYLE. COLORADO'S OWN SINCE 1999

Remember the episode of *Friends* where Phoebe sees the same cocktail table in home after home after home? It's like going to a party where someone is wearing the same dress. Shouldn't your home be just as unique as your are?

Big Box national retailers have nice style. We at HW Home work to keep it real and local. We travel the globe to bring the most unique accessories and styles to our Colorado community. Be it Art Glass from Germany and Belgium, Crystal from Italy, or Pewter Servers from South Africa, HW Home always offers the cutting edge of home furnishings and accents.

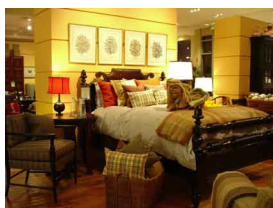
HW Home. Avoiding the "Phoebe" Syndrome.



Boulder | Pearl Street East
1999



Flatiron Crossing Mall
2000



Denver | Cherry Creek North
2004



Landmark | Greenwood
Village 2007

THE HW HOME PAPERLESS CATALOG

We strive to introduce Colorado to the unique, the inspired, and the original. At HW Home you find the antique, the limited edition and the custom piece that no one else has. Just as your home is fresh and ever-changing, so too is HW Home. We could not possibly create a printed catalog for the hundreds of styles we change seasonally. **hwhome.com** is the best representation of our aesthetic and in this information age, we feel it is *the right thing* to do for our environment.



Did you know:

~ **100+ million trees** worth of bulk mail arrive in U.S. mail boxes each year - the equivalent of deforesting the entire Rocky Mountain National Park every four months.

(New American Dream calculation from Conservatree and U.S. Forest Service statistics)

~ In 2005, **5.8 million tons** of catalogs and direct mailings ended up in the U.S. municipal solid waste stream - enough to fill over **450,000 garbage trucks**. Parked bumper to bumper these garbage trucks would extend from Atlanta to Albuquerque. Less than **36%** of this mail was recycled.

(U.S. Environmental Protection Agency)

~ Americans throw away **44% of bulk mail unopened**, yet still spend **8 months per lifetime** opening bulk mail.

(Consumer Research Institute)

Please visit us at **hwhome.com** and register your home and email address. This cuts down the amount of mail we print and send. Know that we do not share or sell our lists ever! It is the best way to keep you informed of special events and promotions, and is good for Mother Earth.

DOCTORS STILL MAKE HOUSE CALLS? OUR DESIGN CONSULTANTS ARE ALWAYS ON CALL

Decorating a home can be both exhilarating and daunting. Our Design Consultants are ready to help you select just the right **colors and treatments** for your walls; Give each room it's own personality with stylish **accessories**; and Select from hundreds of **in-stock styles** and **custom order styles** to find the perfect fit for your home.

With a furniture purchase, our interior design consultation services are complimentary. Depending on your needs, a house call to see how you live might be just what the doctor ordered.



FLATIRON SUMMER NIGHTS CONCERT SERIES IN THE VILLAGE

Thursdays, June 5 through
August 28, 2008
6-9 pm

Thursday, June 5, 2008
BOOGIELICIOUS

Thursday, June 12, 2008
THE FAB 4

Thursday, June 19, 2008
**KAHUNA BEACH PARTY with
the MARGARITA BROTHERS**

Thursday, June 26, 2008
CHASE N' THE DREAM

Thursday, July 3, 2008
**THE CHRIS KING BAND with
BROOKE UNDERBRINK Line
Dance Instructor**

Thursday, July 10, 2008
THE HAZEL MILLER BAND

Thursday, July 17, 2008
NATIONAL BAND TBA

Thursday, July 24, 2008
FUNKIPHINO

Thursday, July 31, 2008
THE NACHO MEN

Thursday, August 7, 2008
**CHRIS DANIELS & THE
KINGS**

Thursday, August 14, 2008
DOTSERO

Thursday, August 21, 2008
JAKARTA

Thursday, August 28, 2008
FACE

HW HOME SPECIALS

ON SELECT FABRICS, LEATHERS, AND LIMITED EDITION STYLES

Ask our Design Consultants about special styles available for immediate delivery. With our local warehouse in Boulder, we have *the best* White Glove Installation Team at your disposal.



FLETCHER CHAIR
In Graham Choc (limited stock) features white goose down seat cushion
\$999 | compare at \$1,770



REGENCY CANE CHAIR
Creme seat cushion
\$395 | compare at \$825



RIVOLI DINING TABLE
Features end drawers with two self storing leaves
\$1,299 | compare at \$1,895



ONYX ACCENT LAMPS
12H 4.5Dia (limited stock)
\$179 | compare at \$289



NEWTON DINING CHAIR
On Select High Performance Fabrics
Shown in Techno Khaki
\$350 | compare at \$690



CHANDLER CHAIR
In Folsom Red (limited stock)
\$1,195 | compare at \$1,895



CHANDLER CHAIR
In Hollis Sand (limited stock)
\$1,195 | compare at \$1,895



CHANDLER CHAIR
In Clovis Chestnut (limited stock)
\$1,195 | compare at \$1,895



FRANK SECTIONAL | MITCHELL GOLD + BOB WILLIAMS
In Graham Gargoyle (limited stock)
\$2,999 | compare at \$5,860



ATLANTA SECTIONAL
On Select High Performance Fabrics | Shown in Geosuede Russett
\$2,999 | compare at \$4,350

BOULDER | Pearl Street East | 1941 Pearl Street | Boulder | t 303 545 0320
BROOMFIELD | Flatiron Crossing Mall | t 720 887 1223
DENVER | Cherry Creek North | 199 Clayton Lane | t 303 394 9222
LANDMARK | 5375 Landmark Place | Greenwood Village | t 303 779 9500
FLORAL DESIGN | HW Design | 3060 Sterling Circle | Boulder | t 303 381 1480

*Log On. Add to Cart.
Click to Purchase. We'll
call to arrange delivery.
Shopping on-line was
never more comfortable.*
hwhome.com

